

LEGEND & SCHEDULE

(* Indicates Trees selected from Warringah council's Local Tree List and / or Duffy Forest Ecological Community Spp. Trees

- Bi** (*) *Banksia integrifolia* (45Lt Pots)
Coastal Banksia (Native)
(approx: 5-10m x 3-5m)
Qty Required: 3
- As** (*) *Backhousia myrtifolia* (45Lt Pots)
Grey Myrtle (Native)
(approx: 4-6m x 3-5m)
Qty Required: 1
- As** (*) *Callicoma serratifolia* (75Lt Pots)
Black Wattle (Native)
(approx: 5-10m x 3-5m)
Qty Required: 4
- As** (*) *Corymbia gummifera* (45Lt Pots)
Bloodwood (Native)
(approx: 5-15m x 4-6m)
Qty Required: 6
- Dv** (*) *Ceratopetalum gummiferum* (45Lt Pots)
NSW Christmas Bush (Native)
(approx: 4-6m x 3-5m)
Qty Required: 8

Native Shrubs

- As** *Acmena smithii "Minor"* (300mm Pots)
Lillypilly (Native)
(approx: 3-5m x 3m)
Qty Required: 34
- SC** *Syzygium "Cascade"* (300mm Pots)
Cascade Lilly Pilly (Native)
(approx: 2-3m x 2m)
Qty Required: 8
- Dv** *Dodonaea viscosa "Pupurea"* (300mm Pots)
Purple Sticky Hop Bush (Native)
(approx: 2-3m x 2m)
Qty Required: 7

Hedges

- As** *Acmena "Allyn Magic"* (200mm Pots)
Allyn Magic (Native)
(approx: 1m x 1m)
Plant @ 600mm Centres where shown
- As** *Westringia "Wynyabbie Gem"* (200mm Pots)
Wynyabbie Gem (Native)
(approx: 1m x 1.5m)
Plant @ 600mm Centres where shown
- As** *Austromyrtus "Aurora"* (200mm Pots)
Aurora (Native)
(approx: 2.5m x 2m)
Plant @ 800mm Centres where shown



Syzygium "Cascade"

Xanthorrhoea media

Anigozanthus flavidus

Banksia integrifolia

Accent Plants

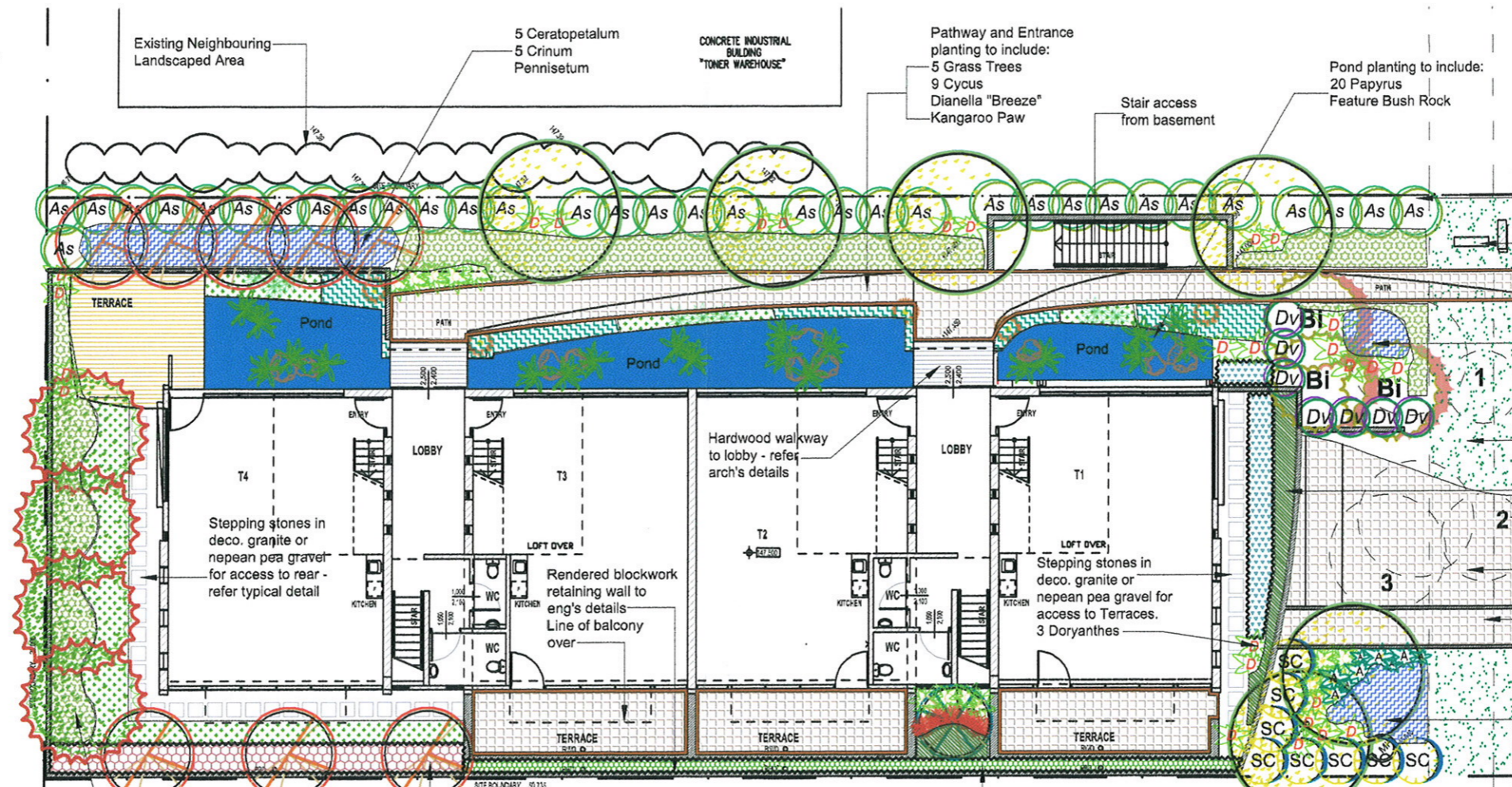
- As** *Xanthorrhoea media* (300-500mm trunks)
Grass Tree (Native)
(approx: 1.5m x 1.5m)
Qty Required: 5
- As** *Cycus revoluta* (25Lt pots)
Japanese Sago Palm (Exotic)
(approx: 1.5m x 1.5m)
Qty Required: 9
- As** *Doryanthes excelsa* (250mm pots)
Gymea Lily (Native)
(approx: 750mm x 750mm)
Qty Required: 27
- As** *Cordylina "Red Sensation"* (250mm pots)
Red Sensation (Native)
(approx: 1-1.5m x 1m)
Qty Required: 5
- As** *Crinum pedunculatum* (250mm pots)
Swamp Lily (Native)
(approx: 750mm x 750mm)
Qty Required: 12
- As** *Cyperus papyrus* (250mm pots)
Papyrus (Exotic)
(approx: 1.5m x 1m)
Qty Required: 20

Other Landscape Items

- Selected feature rock boulders to create features in front entry courtyard areas
- Nominated stepping stones in 75mm Compacted Deco. Gravel or Nepean Pea Gravel as nominated by the client.
- Specified turf to graded & drained open areas
- BRICK GARDEN EDGING
- RETAINING WALLS - Final style & materials determined by client, Final heights determined on site
- Existing trees proposed to be removed & replaced with new landscaping
- Existing trees proposed to be retained and protected - refer to tree survey on the Details Plan LPDA 07 - /2

Ground Covers

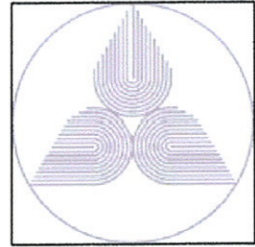
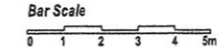
- Asplenium australasicum* (140mm pots)
Birds Nest Fern (Native)
Qty Required: 9
- Hibertia scandens* (140mm pots)
Climbing Guinea Flower (Native)
Plant @ 5 per m2 where shown
- Pennisetum "Purple Lea"* (140mm pots)
Swamp Foxtail (Native)
Plant @ 5 per m2 where shown
- Dianella "Breeze"* (140mm pots)
Flax Lily Cvs (Native)
Plant @ 5 per m2 where shown
- Lomandra "Tanika"* (140mm pots)
Mat Rush (Native)
Plant @ 5 per m2 where shown
- Anigozanthus flavidus* (140mm pots)
Tall Kangaroo Paw (Native)
Plant @ 5 per m2 where shown



- Screen planting to Northern boundary to include:
34 Acmena "Minor"
4 Corymbia
8 Doryanthes
Lomandra "Tanika"
Letterboxes to comply with Aust. post standards
- Planting to include:
3 Banksia
7 Dodonaea
7 Doryanthes
Pennisetum
Lomandra to front
Low clipped Westringia hedge behind
- Turf over easement area
- Hibertia to top of basement entrance
Trees # 1, 2, 3, 4 & 5 proposed to be removed
- New patterned conc. d'way down to basement - style and colour nom. by owner
Pedestrian access down to basement
- Planting to include:
2 Corymbia
8 S. "Cascade"
5 Doryanthes
3 Crinum
9 Asplenium
Pennisetum to front

- Planting to Terraces includes:
1 Backhousia
4 Crinum
5 Cordylina
Hibertia
Low clipped A. "Allyn Magic" hedge

- Planting to Western boundary to include:
4 Callicoma
4 Doryanthes
Lomandra "Tanika"
Dianella "Breeze"
- Screen planting to Southern boundary to include:
3 Ceratopetalum
Austromyrtus hedge



NB: This plan should be read in conjunction with the architectural and hydraulics plans. Work specific to these plans should be prepared in accordance to these plans, including specification and details prior to the installation of landscaping, and should not be altered or compromised during landscape construction. **Retaining wall details to engineers design.** Elements such as drainage swales may be incorporated in garden bed areas (using non-floatable mulch) without compromising the capacity or form.

This plan has been prepared with reference to **Warringah Councils** Landscaping Guidelines & requirements. Planting proposed using mainly indigenous, commercially available plant species selected from local planting lists and the BASIX local plant list and from Sydney Waters "Plant Selector" web site one-drip rated native plants (**acceptable for Basix planting**).

The Design & location of new letter boxes shall be in accordance with Australia Post's "Requirements for Delivery of Mail to Residential Premises" published Feb '97.
All noxious weeds listed in Councils weed lists & located on the site shall be continually removed & suppressed.
Reinstate all boundary fencing in poor condition with Council approved 1.8m fencing to rear of building line, rake to 1m forward of BL.
Pollution, sediment & erosion control devices as specified shall be in place, and maintained for the duration of the construction period.
D.A approved landscape plan's are required to be constructed as approved to obtain occupancy certificate. **Permeable areas may be indicated to achieve site coverage restrictions & should be constructed as drawn on this plan.**

ISSUE C: PLAN AMENDED AS PER ARCH'S LAYOUT CHANGES JULY '07
ISSUE B: AMENDED AS PER ARCH'S LAYOUT CHANGES MAY '07

Conzept Landscape Plan

PROPOSED COMMERCIAL DEVELOPMENT

4 TILLEY LANE, FRENCHS FOREST

PO Box 416,
CREMORNE 2090

www.conzept.net.au
enquiries@conzept.net.au

Phone: 9438 1744
Fax: 9438 1766
Mobile: 0413 861 351

Client: LIFE PROPERTY
Council: WARRINGAH

Scale: 1:200 @ A3
Date: May 2007
Drawing # LPDA 07 - 234 / 1C